



IAEA

Atoms for Peace: The First Half Century

1957-2007

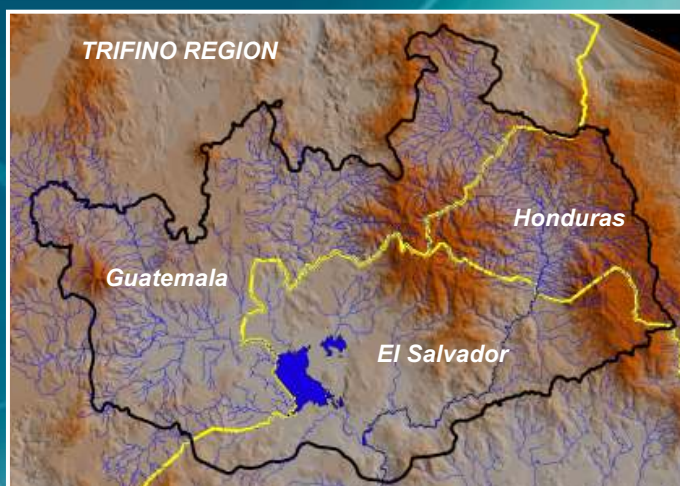
Sustainable development of the Upper Lempa River water basin: Guatemala, Honduras and El Salvador

The challenge...

This project is part of a regional effort to ensure the sustainability of water resources in the Upper Lempa River Basin, which drains from El Salvador, Guatemala and Honduras, in an area called the Trifinio region.

The project...

Isotope hydrology has been used to identify the movement of water from precipitation to the Lempa River through volcanic and alluvial aquifers, in order to support the establishment of a plan for an integrated watershed management programme in the Trifinio region.



Guatemala, Rio Lempa. Future monitoring station near Esquipulas



El Salvador, rain monitoring in the Zapotitan region

The impact...

- Harmonization of transboundary hydrographical, geological and hydrogeological information.
- Establishment of a transboundary observation network of the chemical and isotopic composition of precipitation, groundwater and surface water.

RLA8038: Sustainable Development of the Environment and Water Resources in the Upper Lempa River Basin